



Flagstaff House

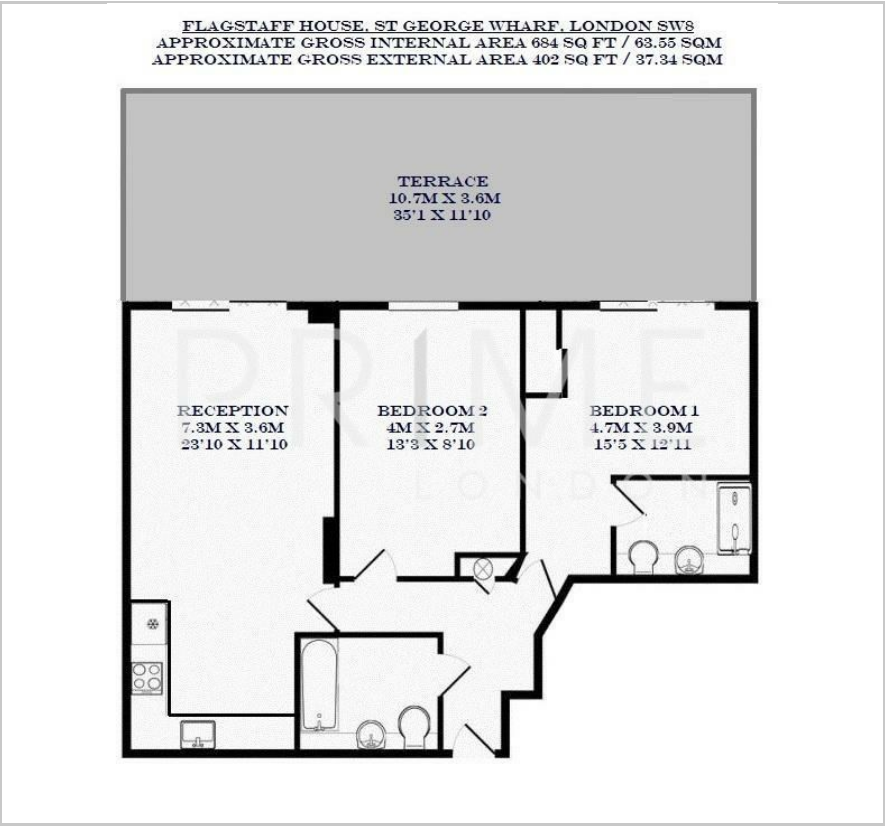
St George Wharf, SW8 2LZ

£625 Per Week



B

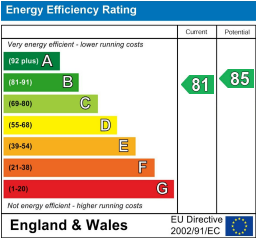
Floor Plan



Area Map



Energy Efficiency Graph



Viewing

By appointment. Contact us on 0207 928 6663 if you wish to arrange a viewing appointment for this property, or require further information.

- Huge 400 sq ft terrace
- Fantastic transport links
- River views
- Riverside bars and restaurants
- Wellness facilities
- Direct access to Vauxhall Underground Station

An excellent two bedroom apartment, with river views and a huge 400 sq ft terrace, available for lease in St. George Wharf exclusively through Prime London.

This apartment benefits from the fantastic transport links afforded by this very well kept complex by The River Thames.

St George Wharf offers on site riverside bars and restaurants such as Waterfront London, The Riverside, Four Degree and Pop Art Sushi as well as direct access to Vauxhall Underground Station on the Victoria Line.

For additional convenience other on site outlets include Tesco Express, Pret a Manger, Hudson's Dry Cleaners, Riverside Medical Centre & Dental Spa and more.



These particulars, whilst believed to be accurate are set out as a general outline only for guidance and do not constitute any part of an offer or contract. Intending purchasers should not rely on them as statements of representation of fact, but must satisfy themselves by inspection or otherwise as to their accuracy. No person in this firms employment has the authority to make or give any representation or warranty in respect of the property.